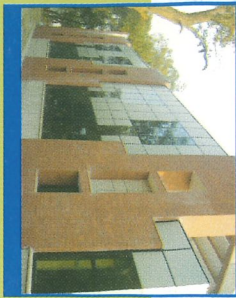




'69



OUTREACH '69 & '80  
at the Indian Institute of Technology Kanpur  
has been conceived to meet  
the requirements of Student Placement and  
Alumni Networking.

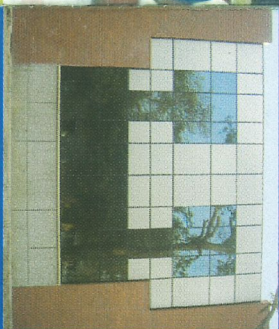
The creation of this facility  
has been largely possible  
due to the generous contributions of  
the Class-of-1969 and the Class- of-1980.



'80

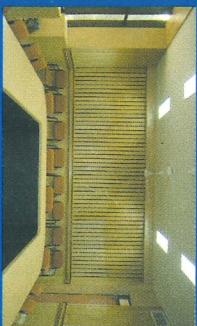
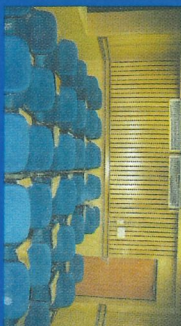
### Salient Design Features

- State of the art building conceived with vibrant indoor and outdoor spaces integrating advanced modern construction technology and efficient services.
- Building envelope design incorporating energy efficient features.



- Ambience enriched by the natural wooded setting and informal outdoor interaction spaces such as terraces, spectators gallery, covered stilted areas adjoining landscape courts as extension to formal indoor spaces.

- Double height naturally lit entrance lobby with glazed walls provides views towards the sports field.
- Existing trees preserved and integrated with the built environment.

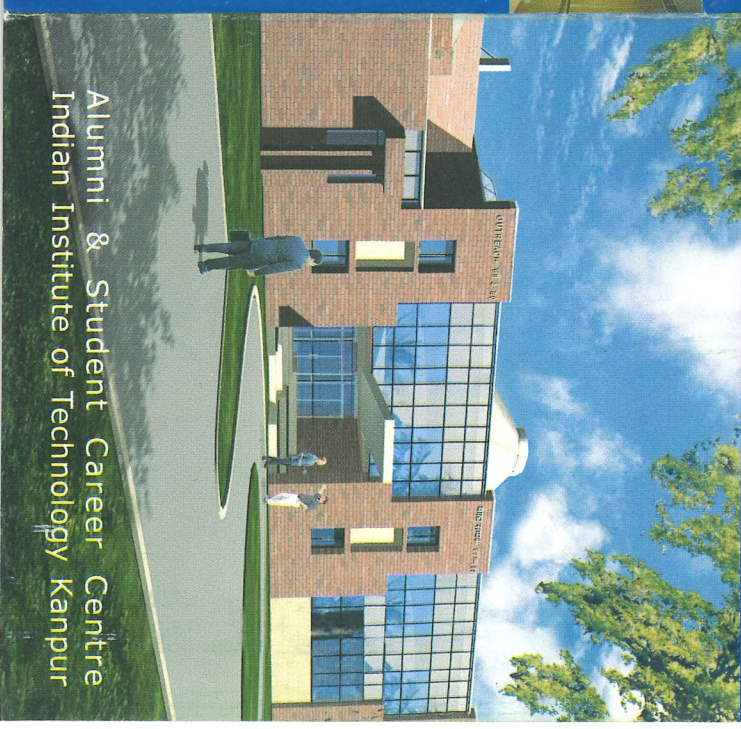


- Shaft of natural light in the circular Hall of Fame to highlight the achievements of IITK Alumni.
- Natural materials such as stone and brick used for flooring and external finishes.



Indian Institute of Technology Kanpur  
Kanpur - 208016

# OUTREACH '69 & '80



Alumni & Student Career Centre  
Indian Institute of Technology Kanpur



# OUTREACH

## '69 & '80

### Milestones

August 15 2005: Bhumi Pujan  
December 26 2006: Inauguration

### Architects

■ Kanvinde Rai & Chowdhury, New Delhi  
Consultants  
Structure: Planning & Design Bureau  
Elec & HVAC : Kanwar Krishen Associates Pvt Ltd  
Plumbing: S.G. Deolalikar Consultants  
Landscape: Yogesh Kapoor

### Project Management

Institute Works Department, IIT Kanpur

### Contractors

M/s Gupta Enterprises, New Delhi  
M/s Kailash Electricals, Kanpur  
M/s United Refrigeration, Kanpur  
M/s Green Earth, Kanpur



### Facilities

Total Built-up Area: 1875 sqm (20000 sqft)

- Auditorium with audio-visual facilities for 220 persons
- Alumni Hall of Fame/Exhibition Area
- Large Skylit Entrance Lobby
- Seminar Room I – 40 persons
- Seminar Room II – 30 persons
- Library and Media Centre
- Six Meeting Rooms
- Offices for Alumni Association, President and Secretary
- Offices for Chairman and Student Placement
- Landscaped outdoor spaces for informal meetings
- Tiered covered Spectator Gallery overlooking the sports facility
- Terraces with pergolas as extensions to meeting rooms

